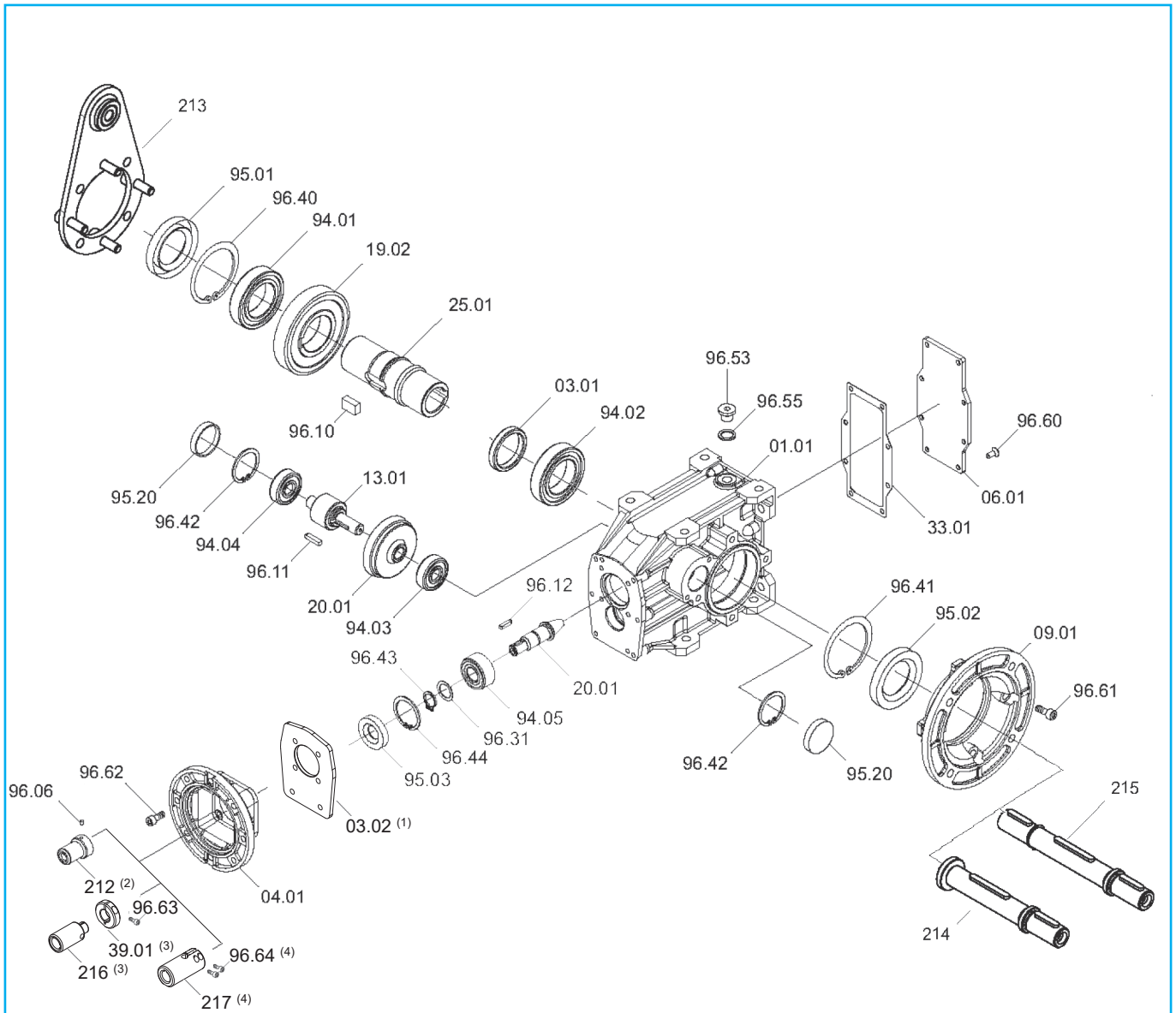


## TA/TF 56B - TA/TF 63B - TA/TF 75B



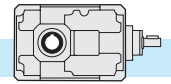
T	Rodamientos / Bearings / Roulements					Retenes / Oilseals / Bagues d'étanchéité			Reten ciego Closed oil seal Capot
	94.01	94.02	94.03	94.04	94.05	95.01	95.02	95.03	95.20
<b>56B</b>	<b>6007</b> 35/62/14	<b>6007</b> 35/62/14	<b>6201</b> 12/32/10	<b>6201</b> 12/32/10	<b>3201</b> 12/32/15.9	35/62/7	35/62/7	<b>12/32/7</b>	ø 32x7
<b>63B</b>	<b>6008</b> 40/68/15	<b>6008</b> 40/68/15	<b>6301</b> 12/37/12	<b>6301</b> 12/37/12	<b>3202</b> 15/35/15.9	40/68/10	40/68/10	<b>15/35/7</b>	ø 37x7
<b>75B</b>	<b>6010</b> 50/80/16	<b>6010</b> 50/80/16	<b>6203</b> 17/40/12	<b>6203</b> 17/40/12	<b>3202</b> 15/35/15.9	50/80/8	50/80/8	<b>15/35/7</b>	ø 47x7

(1) Solo para TF75B PAM 71, 80, 90 / Only for TF75B PAM 71, 80, 90 / Apenas para T75B PAM 71, 80, 90.

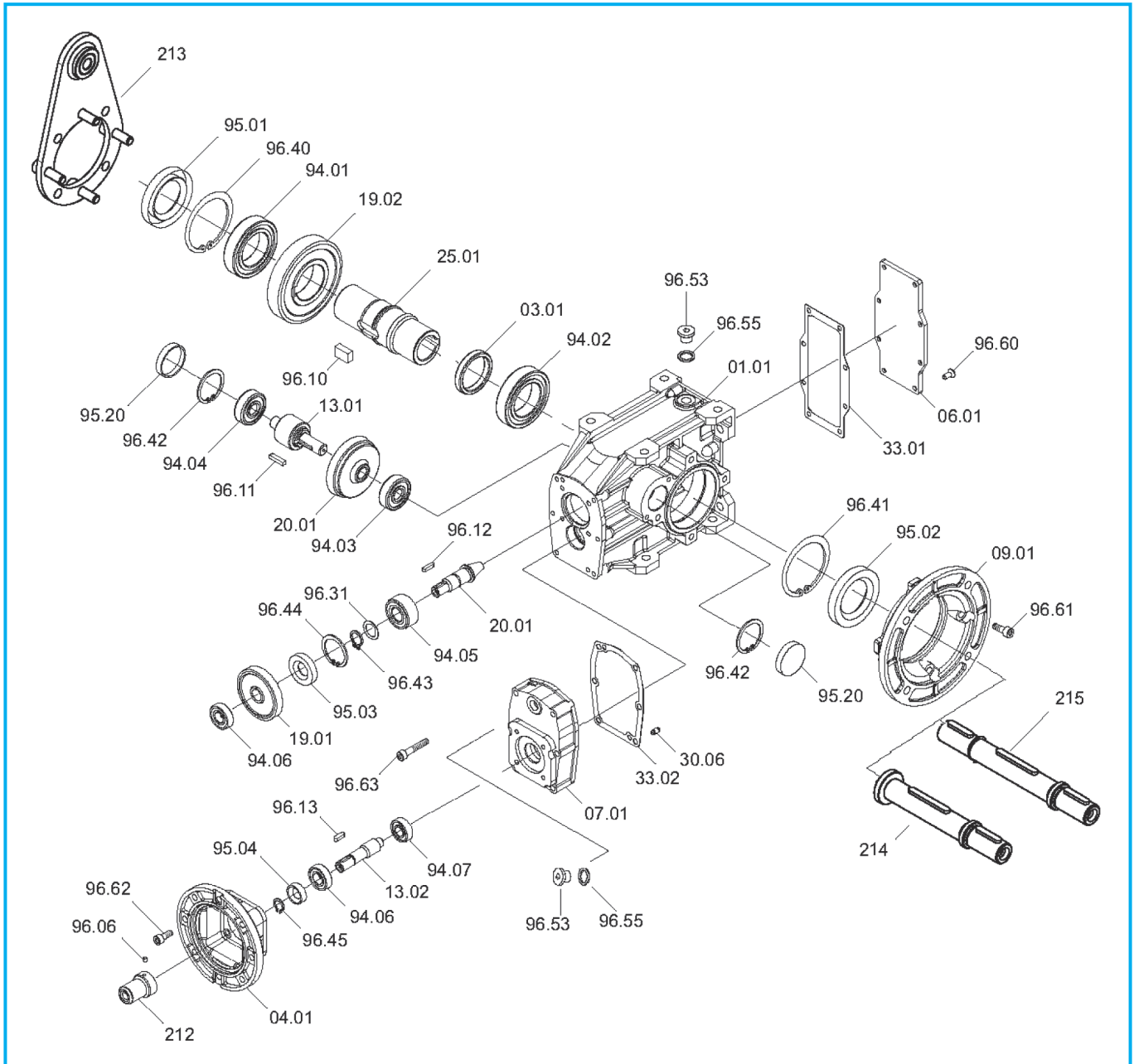
(2) Solo para TF56B e TF63B PAM 56, 63 / Only for TF56B and TF63B PAM 56, 63 / Apenas para TF56B und TF63B PAM 56, 63.

(3) Solo para TF56B e TF63B PAM 71, 80, 90 / Only for TF56B and TF63B PAM 71, 80, 90 / Apenas para TF56B und TF63B PAM 71, 80, 90.

(4) Solo para TF75B tutti i PAM / Only for TF75B all PAM / Apenas para TF75B alle PAM.

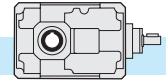


## TA/TF 56C - TA/TF 63C - TA/TF 75 C

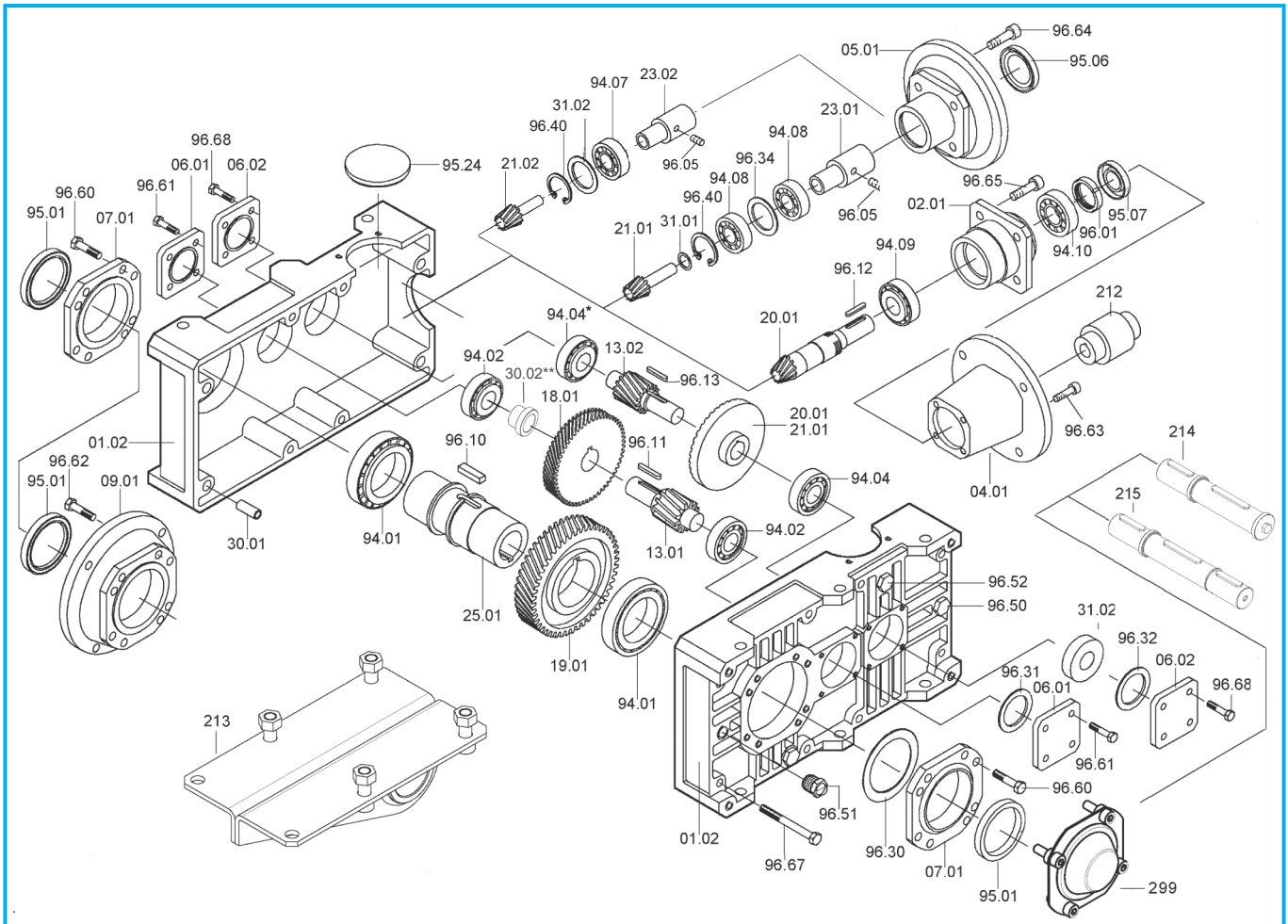


T	Rodamientos / Bearings / Roulements								Retenes / Oilseals / Bagues d'étanchéité				Reten ciego / Closed oil seal / Capot
	94.01	94.02	94.03	94.04	94.05	94.06	94.07	94.08	95.01	95.02	95.03	95.04	95.20
<b>56C</b>	6007 35/62/14	6007 35/62/14	6201 12/32/10	6201 12/32/10	3201 12/32/15.9	6001 12/28/8	6000 10/26/8	6001 12/28/8	35/62/7	35/62/7	12/32/7	12/22/7	∅ 32x7
<b>63C</b>	6008 40/68/15	6008 40/68/15	6301 12/37/12	6301 12/37/12	3202 15/35/15.9	6001 12/28/8	6000 10/26/8	6001 12/28/8	40/68/10	40/68/10	15/35/7	12/22/7	∅ 37x7
<b>75C</b>	6010 50/80/16	6010 50/80/16	6203 17/40/12	6203 17/40/12	3202 15/35/15.9	6002 16/32/9	6000 10/26/8	6001 12/28/8	50/80/8	50/80/8	15/35/7	12/22/7	∅ 47x7





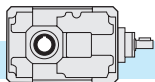
**TA..C - TC..C - TF..C**



T	Rodamientos / Bearings / Roulements							Retenes / Oilseals / Bagues d'étanchéité				
	TA - TC - TF			TC	TA - TF		TA - TC - TF	TC	TA - TF			
	94.01	94.02	94.04	94.07	94.08	94.09	94.10	95.01	IEC	95.06	95.07	
<b>80C</b>	<b>32010</b>	<b>30204</b>	<b>30302</b>	<b>3203</b>	<b>7203</b>	<b>30203</b>		50/65/8	<b>63</b>	<b>25/52/7</b>	15/40/10	
	50/80/20	20/47/15.25	15/42/14.25	17/40/17.5 (i= 250, 315, 400, 500, 630)	17/40/12	17/40/13.25			71	<b>30/52/7</b>		
									80	<b>35/52/7</b>		
									90	<b>37/52/8</b>		
<b>100C</b>	<b>32012</b>	<b>30305</b>	<b>30204</b>	<b>3205</b>	<b>7205</b>	<b>32005</b>		60/80/10	71 - 80	<b>35/62/7</b>	20/47/7	
	60/95/23	25/62/18.25	20/47/15.25	25/52/20.6 (i= 250, 315, 400, 500, 630)	25/52/15	25/47/15			90	<b>40/62/7</b>		
									100 - 112	<b>45/62/8</b>		
<b>125C</b>	<b>32015</b>	<b>32206</b>	<b>30305</b>	<b>3206</b>	<b>7206</b>	<b>32006</b>		75/95/10	80 - 90	<b>40/72/7</b>	25/58/10	
	75/115/25	30/62/21.25	25/62/18.25	30/62/23.8 (i= 250, 315, 400, 500, 630)	30/62/16	30/55/17			100 - 112	<b>45/72/8</b>		
									132	<b>55/72/10</b>		
<b>160C</b>	<b>32019</b>	<b>32207</b>	<b>32206</b>	<b>3207</b>	<b>7207</b>	<b>32007</b>		95/125/12	80 - 90	<b>45/80/10</b>	30/62/7	
	95/145/32	35/72/24.25	30/62/21.25	35/72/27 (i= 250, 315, 400, 500, 630)	35/72/17	35/62/18			100 - 112	<b>45/80/10</b>		
									132	<b>55/80/10</b>		
									160	<b>60/80/8</b>		
<b>180C</b>	<b>32024</b>	<b>31309</b>	<b>32206B</b>	<b>3207</b>	<b>7207</b>	<b>32007</b>		120/160/15	180	<b>65/80/8</b>	30/62/7	
	120/180/38	45/100/27.25	30/62/21.25	35/72/27 (i= 250, 315, 400)	35/72/17	35/62/18			80 - 90	<b>45/80/10</b>		
									100 - 112	<b>45/80/10</b>		
									132	<b>55/80/10</b>		
<b>200C</b>	<b>32026</b>	<b>31310</b>	<b>30307</b>	—	<b>7209</b>	<b>33109</b>		130/160/12	160	<b>60/80/10</b>	40/80/10	
	130/200/45	50/110/29.25	35/80/22.75		45/85/38	45/80/26			180	<b>65/100/10</b>		
			* <b>32208</b>						200	<b>75/100/10</b>		
			40/80/24.75									

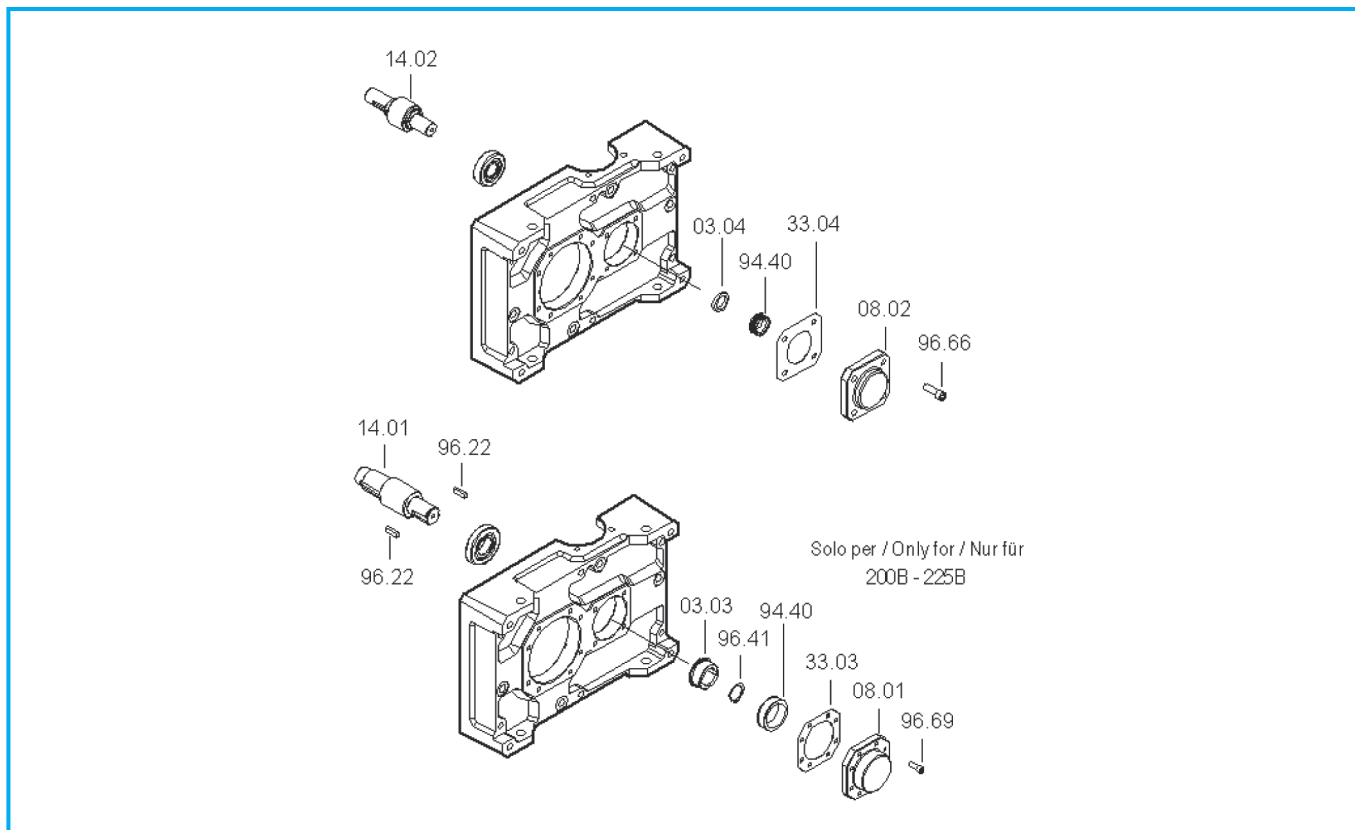
\* Presente solo en la versión con anti-retorno / Only on version with back stop device / Uniquement pour la version avec anti-dévierneur

\*\* Solo para T180C / Only for T180C / Uniquement pour T180C



**TA..B - TC..B - TF..B - TA..C - TC..C - TF..C**

**Dispositivo anti-retorno- Backstop device- Dispositif anti-dévireur**



T...B	Rueda libre / Free wheel / Roue libre 94.40
71	FE 423 Z
90	FE 428 Z
112	BF 50 Z 16
140	BF 70 Z 21
180	FE 8040 Z 19
200	FE 8054 Z 25
225	FE 8072 Z 25

T...C	Rueda libre / Free wheel / Roue libre 94.40
80	FE 423 Z
100	FE 428 Z
125	BF 50 Z 16
160	BF 70 Z 21
180	BF 70 Z 21
200	FE 8040 Z 19

Cuando se ordene un recambio, especificar siempre el número particular de cada pieza referenciado en el despiece (ver gráfico de despiece) fecha (1), n° de código (2) y n° variante (3).  
(Ver placa de características).

*When ordering please specify the spare part number (see exploded view) as well as the date (1), the article number (2) and the variant number (3) (see plate).*

Lors de la commande de pièces détachées, toujours rappeler le n° de la pièce (voir plan éclaté), la date (1), le n° de code (2) et le n° de la variante (3).  
(Voir plaquette signalétique).

CODIGO: Lista de componentes  
CODE: Base list  
CODE: Liste du matériel


TIPO: descripción  
TYPE: description  
TYPE: description

RAP: relación de reducción  
RATIO: reduction ratio  
RAP: rapport de réduction

VARIANTE:  
código alfanumérico  
MODEL:  
alphanumeric code  
VARIANTE:  
code alpha numérique

Type Code: Spec. In. LUBRIFICATION OIL

Ratio= Ou.



S/N: MADE IN ITALY WWW.TRAMEC.IT

10/2017

FECHA: mes/año  
DATE: month/year  
DATE: mois/année